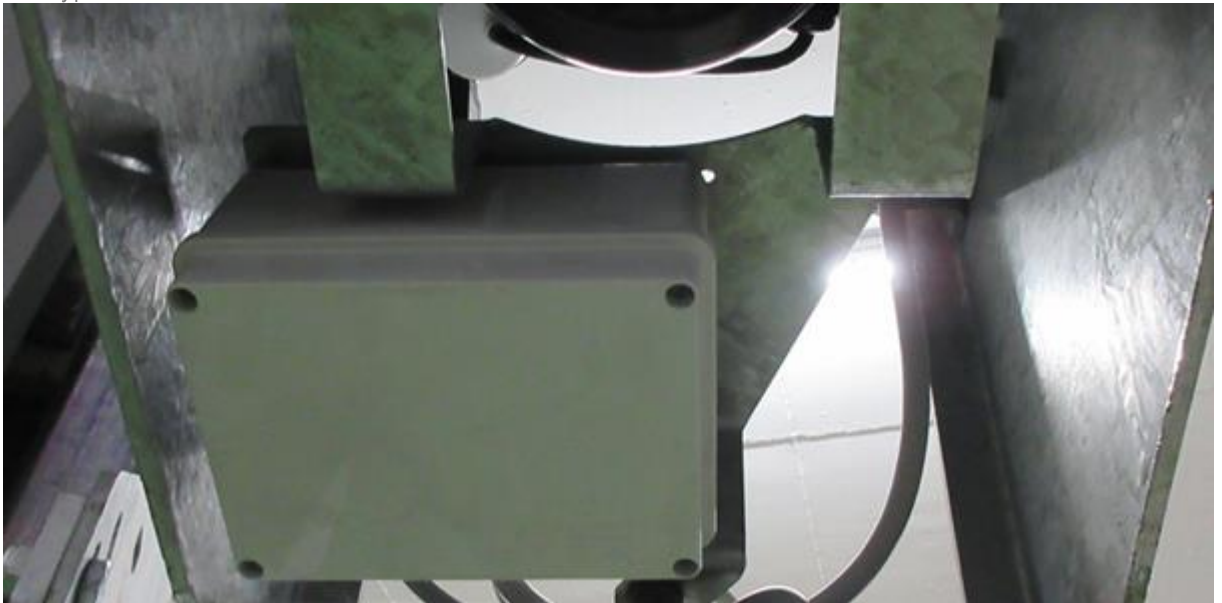


Umbauanleitung auf die neue Steuerung 2021 bei 18690/18680

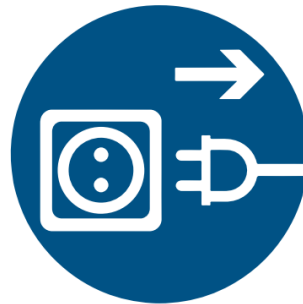
Steuerung alt
Old type of control unit



Neue Steuerung
New type of control unit



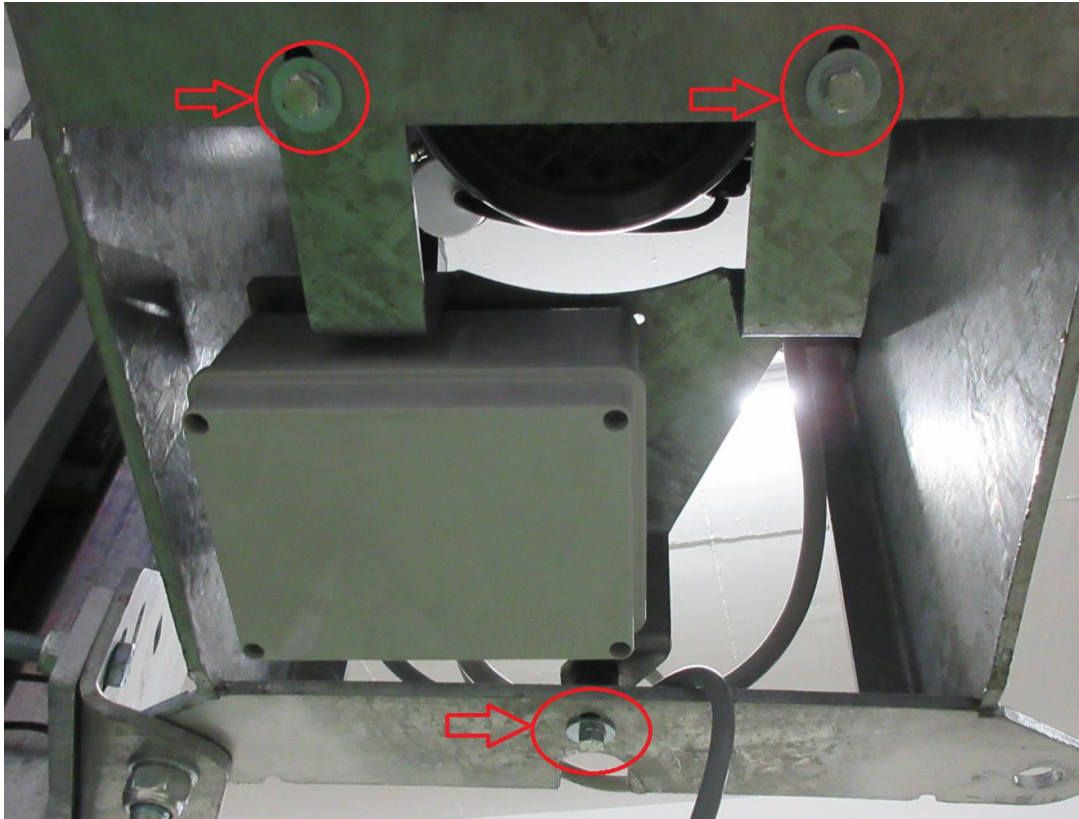
1. DE – Netzstecker ziehen
EN – disconnect the power supply



2. DE – Maschine schwenken
EN – turn machine from wall



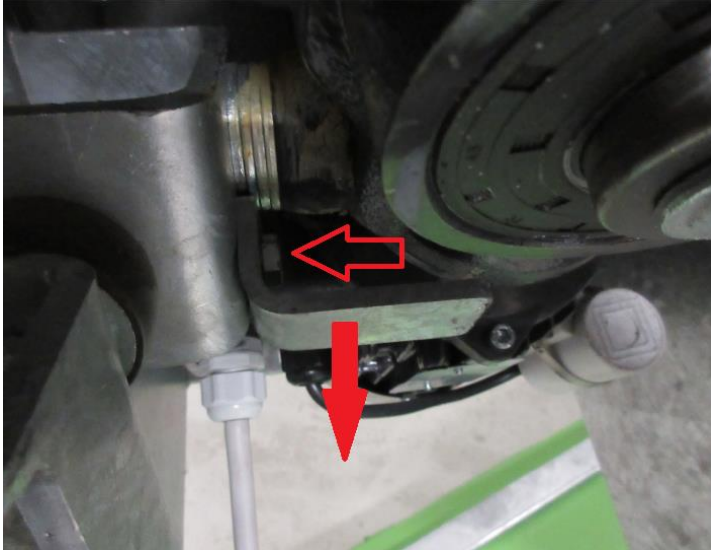
3. DE – Befestigungsschrauben der Steuerung lösen
EN – loosen screws of control unit



4. DE – Rollentaster demontieren
EN – demount roller switch



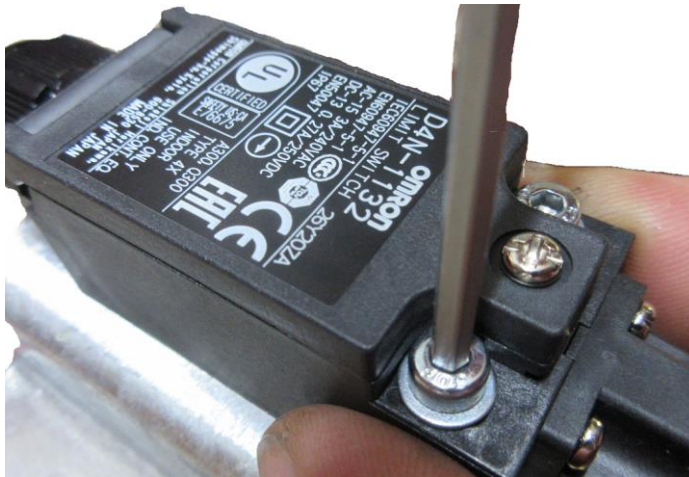
5. DE – Sicherungsbügel Motor entfernen
EN – remove safety catch



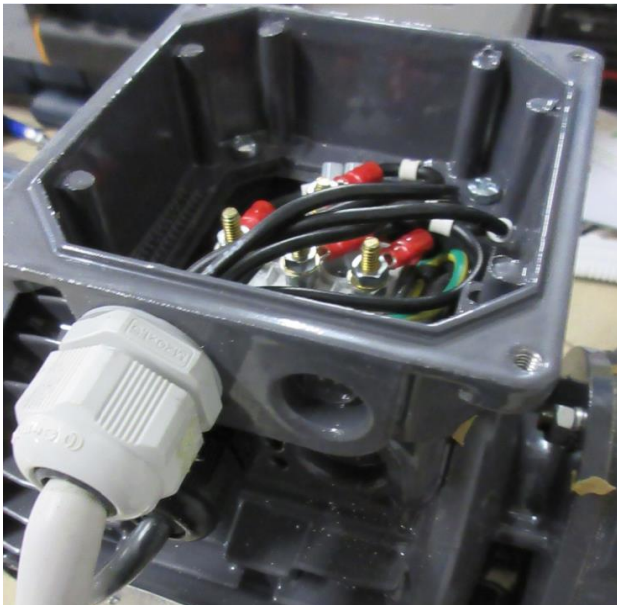
6. DE – Motor lockern
EN – loose motor



7. DE – Motor und Steuerung herausnehmen
EN – remove control unit and motor
8. DE – Montageplatte des Sensors ummontieren
EN – change mounting plate of sensor to new unit



9. DE – Motorklemmbrett öffnen
EN – open motor connection box



- 10. DE – Motorzuleitung abklemmen
EN – disconnect motor input cable



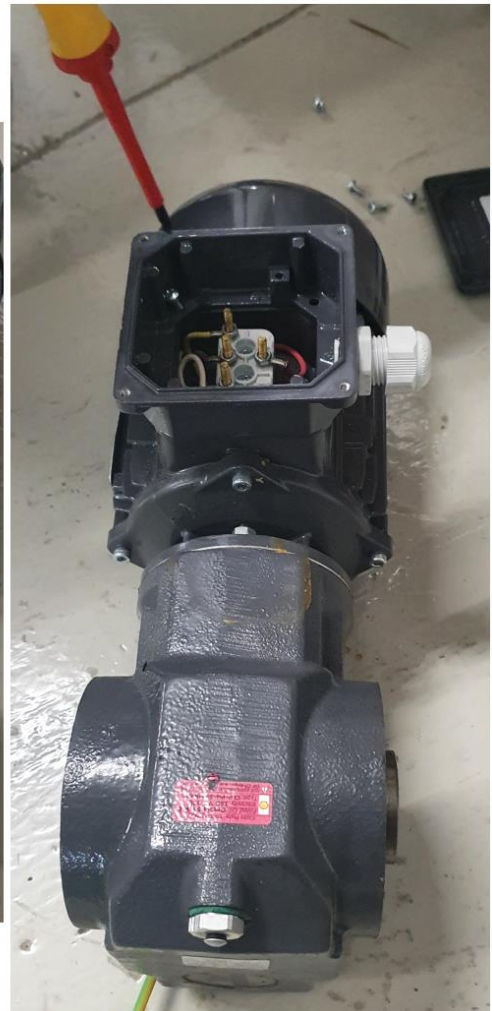
- 11. DE – Kondensator abklemmen
EN – disconnect capacitor



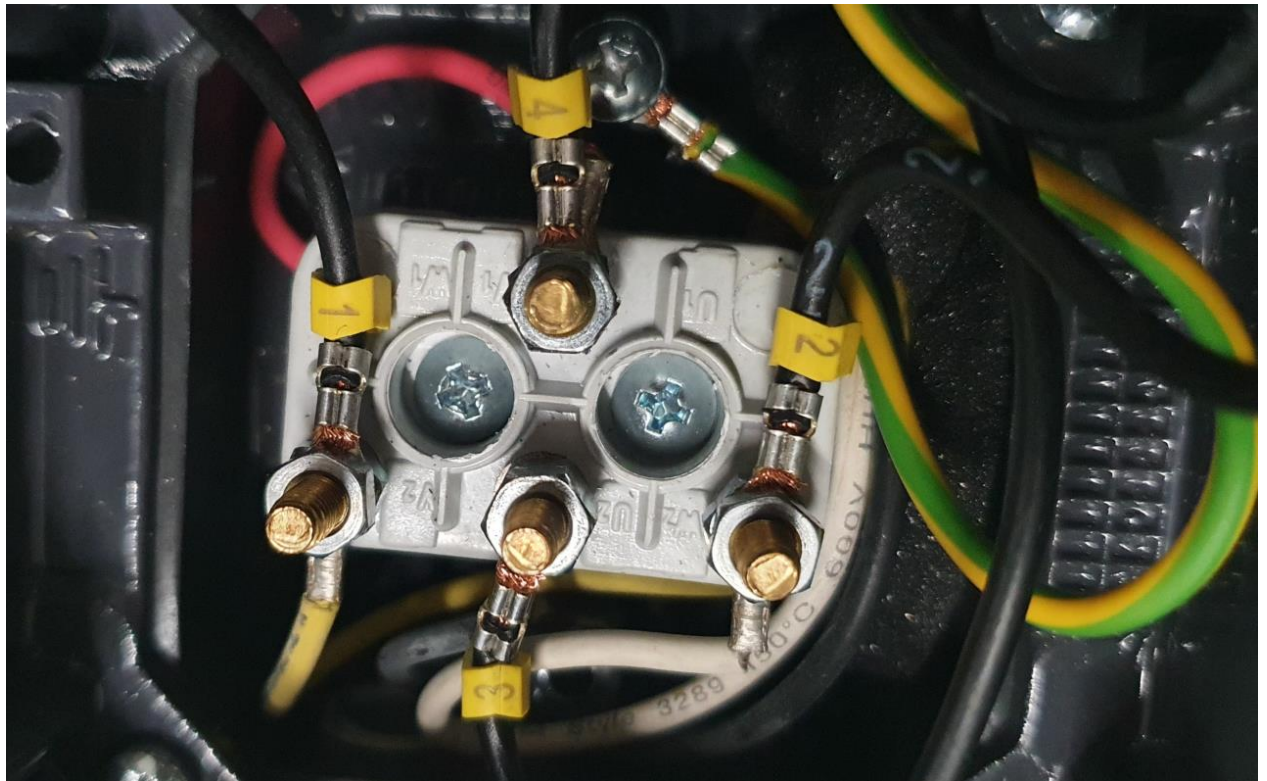
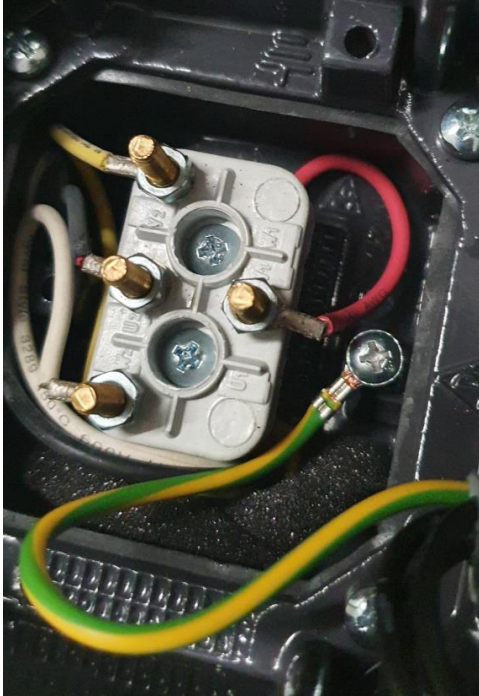
12. DE – Kondensator demontieren
EN – remove capacitor



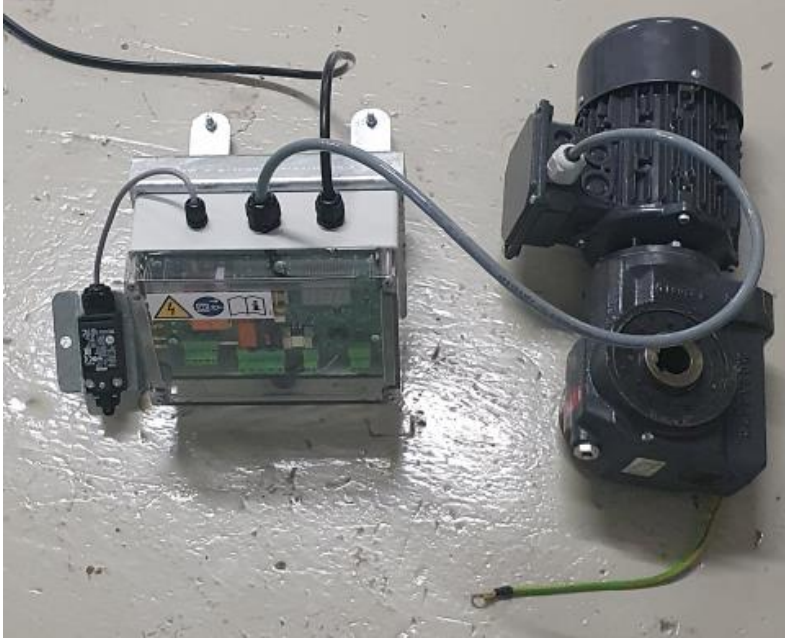
15. DE – Oberteil Motorklemmbox drehen 180°
EN – turn motor connection box top part 180°



- 16. DE – Zuleitung von neuer Steuerung anklemmen
EN – connect input cable of new control unit



- 17. DE – Motorklemmbox schließen
EN – close motor connection box



- 18. DE – Motor einbauen
EN – mount motor

